

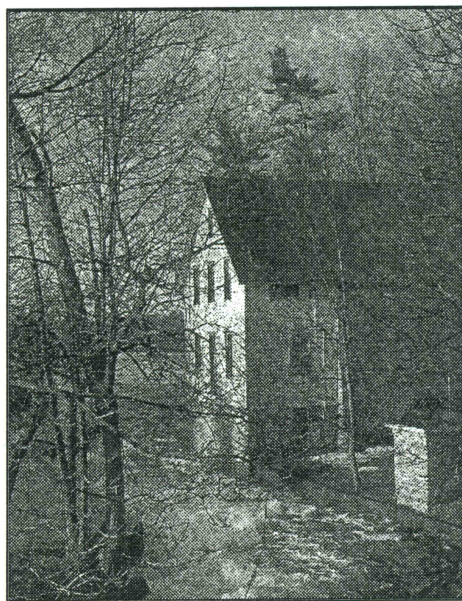
The Trust Is Looking For Your Ideas

Your Trust would like to know your thoughts on a few issues. The Trust receives many opportunities involving potential land acquisition projects. Most of these projects have merit but the Trust often has to make decisions and set priorities as to which projects it will support. The Board of Directors has an obligation to ensure the financial responsibilities of acquiring and maintaining each property is considered but what is also very important is what types of properties the Membership want the Trust to preserve. The Board would also like to know whether Members prefer to support property acquisitions in specific geographical areas or whether the majority of the membership prefers to support property acquisitions throughout the entire Rideau Corridor.

The second item we need your help with is the scheduling and location of the popular Annual Dinner and Volunteer Appreciation Night. This September will mark the fourth anniversary of this Dinner and its popularity continues to grow. In order to ensure as many members as possible can join us for the evening we need your help in selecting the most convenient evening of the week as well as the location for the event.

Please take a few moments to complete the survey and return it in the enclosed envelope.

Corn Roast Is Set To Go August 3rd At Chaffey's



One thing that we know for sure is that the 2002 Corn Roast will take place on August 3rd at the Chaffey's Lock Lockstation. Vince Watters and Nick Brown are busy planning for this year's event. It has been rumoured that Jerry Lee Lewis will be making an appearance, complete with his Baby Grand to rock the night away. The Fast and Furious Sea Trials are returning and the Chaffey's Lock and Area Heritage Society will be defending the Prestigious Rideau Cup against some stiff competition. There is still space for a couple of teams so if you or your group wishes to enter a team, give Dave Walker a call at 613-284-2010. Vince is expecting 2000 people to attend Chaffey's party of the summer and he says he and his team of volunteers will be ready.

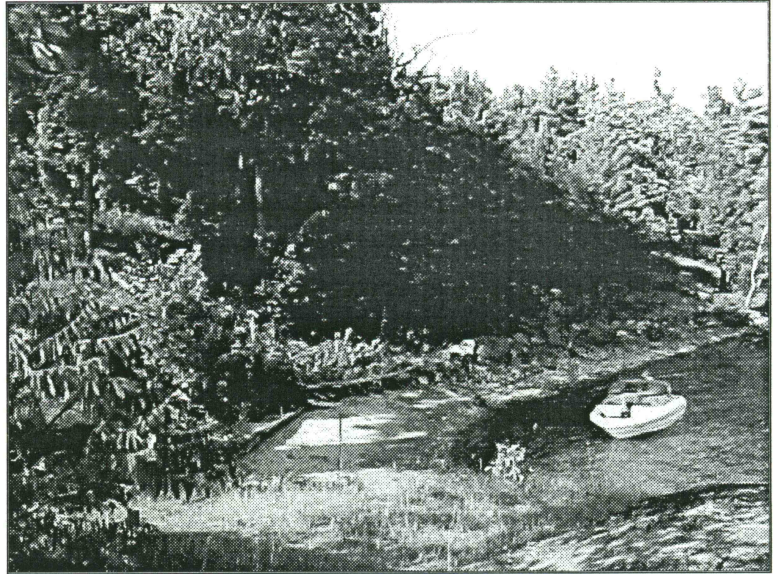
Once again the Trust would like to thank Allan Greig from Enbridge Consumers Gas, Rideau Home Centre, Hersheys, Parks Canada and Molson's for their continuing support

The Number One Program

The land acquisition program continues to be the number one priority of the Trust. Through your generous support six properties along the Waterway are now preserved. Future generations will be able to hike in the woods at VanNiel Woodlands or paddle to Kate's and Jack's Island on Whitefish Lake.

Island 296 in Benson Lake will provide habitat for osprey and your family will be able to swim and picnic at Red Rock on the Big Rideau Lake. Besley Woods, near Kemptville, is preserved and future generations will be able to observe waterfowl in their natural habitat.

With your continued support we will work together to leave a natural legacy for future generations.



Trust Hopes to Have Signage Installed by Summer

With the help of a generous donation from TD Canada Trust, Friends of the Environment Foundation signs will be erected on the properties owned and managed by the Trust. The signage will include the name of the property; give recognition to the donors and as well invite people to continue to enjoy the properties while respecting the natural features.

OLTA Standards and Practices

The Rideau Waterway Land Trust is working with other land trust members of the Ontario Land Trust Alliance in developing and implementing the Land Trust Standards and Practices. This document is modeled after the Standards and Practices already adopted by the U.S. Land Trust Alliance and the Land Trust Alliance of British Columbia. The Land Trust Standards and Practices are guidelines for the "responsible operation of a land trust, which is run legally, ethically and in the public interest and which conducts a sound program of land transactions and stewardship".



The RWLT is taking a lead among community based land trusts in Ontario and will be among the first to formally adopt this program. The community based land trust organizations in Ontario, including the RWLT, are assuming an ever-larger role in land conservation in Ontario. The Ontario Land Trust Alliance and its members are committed to establishing and maintaining viable long-term organizations that the public can place their confidence in to deliver land conservation programs within their communities.



Fall Fundraising Drive

The 2001 Fall Fundraising Drive raised \$14,500 for the programs of the Trust. You are all to be congratulated on your continued support of the Trust.

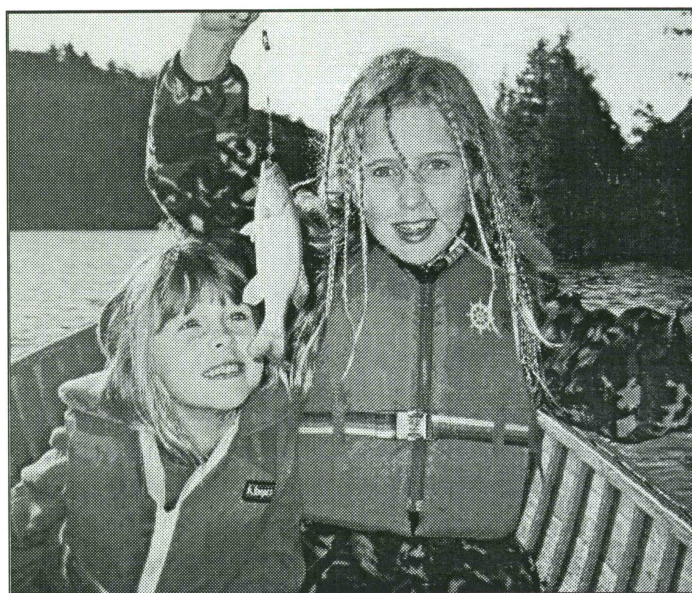
Spring is Membership Time

Please find your membership renewal form enclosed with this bulletin. A donation of \$25 or more entitles your family to full membership benefits. In the past many of you have generously donated at a higher level during the spring membership renewal drive. Please feel free to donate at the level you are most comfortable with knowing that all of your donations are going to help your Trust and the land acquisition program. A number of members have already sent in their 2002 memberships and we would like to thank them.

Please take a few moments and complete the membership card and return it with your completed survey in the enclosed envelope. Charitable receipts will be issued for all levels of donations.

The Trust Has a New Phone Number

As a result of its move to its new office and volunteer training center the Trust has a new phone number, 613-284-2010 and fax number 613-284-8093. The e-mail address remains the same, rwlt@sympatico.ca.



Rideau Waterway Land Trust Foundation
Board Members and Staff
2001 - 2002

President	Peter Hannah 613-728-3571 (w)	Environmental Studies (Planning) University of Waterloo Assistant Chief Planner with J.L. Richards and Associates Ottawa
Vice- President	Marty Moir 800-267-7918 (w)	Biology University of Western Ontario Senior Public Health Inspector
Treasurer	Jeanie Quirt-Brown 613-548-3031 (w)	B.A Queen's University Certified Financial Planner
Secretary	Frank Stewart Symons 613-267-7863 (h)	PhD (Geography) Senior Associate at Lanark Communications Network
Member	Jamie Laidlaw 613-564-7764 (w)	Executive Director of the National Environmental Treasure and Board Member of Laidlaw Foundation
Member	Douglas Gordon Lewis 613-954-5340 (w)	LLB University of Western Ontario General Council, Department of Justice, Commercial Law Division, Industry Canada
Member	Sharon Walker 613-547-8070 x 265 (w)	Ontario Art College Lead Designer & Educational Trainer With Upper Canada Office Systems
Member	Heather Orr 613-544-0002 (h)	Third Year Environmental Biology Student Queen's University Member Society for Conservation Biology
Member	George Riley 613-692-0968 (h)	PhD (Geology) Retired Executive - Shell Oil
Member	David Donaldson 613-544-4620 (h)	Retired Senior Federal Public Servant Director Rideau Lakes Environmental Foundation
Executive Director	Dave Walker 613-284-2010 (w)	B.Com (hons) Queen's University Executive Director RWLT and Vice-Chair OLTA

sel