

NEWS BULLETIN

INSIDE THIS ISSUE:

Annual Dinner	2
New Director Elected	2
Donation from GCMCF	3
Opportunities to Preserve	3
Annual Campaign	3
Show your Support!	4

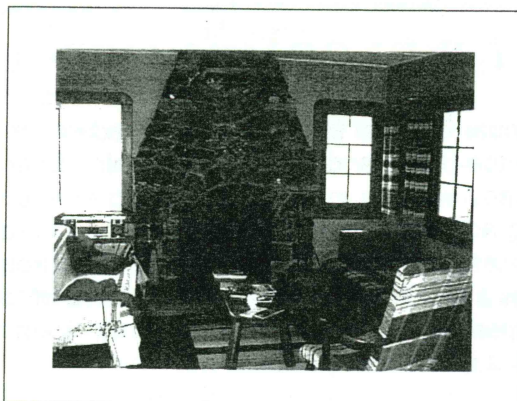
TRUST RECIEVES GENEROUS DONATION OF ISLAND AND COTTAGE

The Trust recently received a generous donation from one of its founding members. The gift consists of a private island and cottage in Newboro Lake. This delightful retreat is reminiscent of the early styles of cottages that were built on the Rideau. It features a wonderful stone fireplace and bright airy sun porch, a perfect place for that evening game of crokinole. It is located in a natural area of the lake where the donor spent many hours canoeing the bays and wetlands, developing a deep appreciation for the natural beauty of not only Newboro Lake but of the entire region.

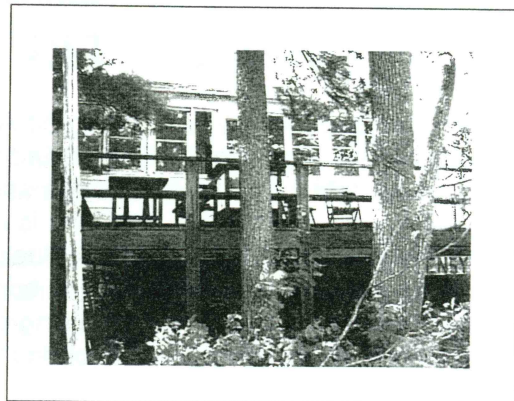


Summer at Newboro Lake

The donor made a decision to donate the cottage and island with the understanding that it be sold and the proceeds be used to preserve natural areas so that future generations can enjoy them as their family has.



The interior features a heritage stone fireplace.



The cottage also has a sun porch and deck surrounded by mature trees.


Rideau Waterway
LAND TRUST
 FOUNDATION

1 Jasper Avenue
 Smiths Falls, Ontario
 Phone: (613) 284-2010
 Email: info@rwl.org

Charitable Registration
 #89233-6348-RR0001

2002 ANNUAL DINNER

The Annual Dinner was once again held at the Queen's University Biological Station in Chaffey's Lock. The evening was a great success, as many of you who attended would agree.

The meal was terrific and Mr. Doug Wolthausen, the guest speaker of the evening, was informative. The highlight of the evening, though, was definitely the cake auction.

Led by the enthusiasm of members like Janet Weisiger, Board members and Trust members donated 9 decadent desserts to be auctioned after the

main course. If your table wanted to enjoy your choice of these delicacies then you had to outbid your fellow guests.

The event raised \$945 for the programs of the Trust. We understand that Jamie Laidlaw was so astounded that someone would actually pay to sample his culinary masterpiece that he has taken a position as a pastry chef at one of Ottawa's leading restaurants.

The Trust's Annual Dinner will only get better in the years to come, so make sure that you don't miss out next time!

"The evening was a great success, as many of you who attended would agree"



The mouthwatering desserts that were auctioned at this year's Annual Dinner, which were graciously donated by Trust & Board members

TRUST WELCOMES NEW DIRECTOR

At the Annual General Meeting that preceded the Annual Dinner, Tina Bailey was elected to the Board and joined the returning Board members. Tina grew up in Ottawa and now resides in Kingston, having enjoyed the Rideau from start to finish. Tina is a graduate of the Centre for Land and Water Stewardship at the University of Guelph and is presently with the BioCap Foundation at Queen's University. Tina brings a wealth of knowledge in the area of land stewardship as well as fundraising expertise to the Board of the Trust. I am sure you all join with us in welcoming Tina to her new position.

TRUST RECEIVES \$22,300 FROM THE GEORGE CEDRIC METCALF CHARITABLE FOUNDATION

With the increased interest from landowners in preserving their lands comes the increased need for educational fact sheets and training workshops for landowners and volunteers of the Trust. The George Cedric Metcalf Charitable Foundation recently awarded the Trust \$22,300 towards this purpose. The Trust is partnering with other land trusts in eastern Ontario to develop this resource material and will begin a series of workshops in the spring of 2003. Mr. Metcalf came to Canada as a young boy of modest means and found employment as a stock boy in William Neilson's ice cream plant. He became a salesperson for the company, where he met Garfield Weston who convinced him to join Loblaw's. George Metcalf rose to become the president and managing director of George Weston Limited and upon his death, left his estate of over \$100 million to endow a Foundation in his name. Today that Foundation is a major funder of environmental groups in Canada.

*"Whether it be through
conservation easements
or
donation of land, the
support for the Trust and
its programs continues to
grow"*

OPPORTUNITIES TO PRESERVE LAND

As many of you are aware your Trust has secured and preserved six parcels of land, stretching from VanNiel Woodlands in the south to Besley Woods in the north. These lands will be preserved for future generations. In the spring questionnaire you also asked us to make ecological lands a priority in the land securement program. We have heard the message and landowners are responding. In the last few months the Trust has received inquiries from a number of landowners of ecologically sensitive lands who want to see their properties preserved as their gifts to future generations. Whether it be through conservation easements or donation of these lands, the support for the Trust and its programs continues to grow.

ANNUAL CAMPAIGN

As winter approaches many of you have returned to your homes and left the peace and tranquility of the Rideau for another season. Those of us who are fortunate enough to live in the Rideau area year round have watched the maple and birch trees put on a spectacular show of gold and crimson. Mother Nature hesitated this year, but their colours were more vivid and lasted longer than usual. Nature will always be our constant. She will rest and refresh and be brilliant for us again next summer.

In these times of uncertainty one constant for many of our families is the peace and tranquility of our beloved Rideau. Whether it is memories of family reunions or participating in community corn roasts. The time you spent with children and grandchildren swimming at that favourite beach or those short canoe trips to the quiet bays to share in the excitement as

your children watch in awe as this year's newly hatched loons become adults over the summer. Maybe some of you have memories of taking your grandchildren on their first fishing trip and now you wait in anticipation for their return next summer. Each memory weaves for us a tight and binding affection for this beautiful Rideau Waterway.

The sense of togetherness we feel and the memories made when we are with family and friends along the Rideau is something that will last a lifetime.

Over the past few years you have supported the Land Trust and can take pride in the part you have played in preserving some of the natural spaces along the Rideau. These natural spaces make memories possible.

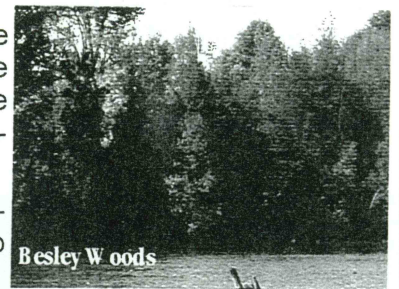
YOUR GENEROUS SUPPORT IS MAKING A DIFFERENCE!



With your support the Trust continues to grow. More and more of your neighbours and friends are joining with you as we all work towards the preservation of some of the remaining natural spaces along the Rideau. In five short years, through your generous support, your Trust has been able to acquire six properties, with over 7,000 feet of shoreline, and preserve them in perpetuity.

Situated on a rocky point on the west shore of Cranberry Lake is VanNiel Woodlands. This 23-acre property has over 3000 feet of shoreline on the Rideau. The property is entirely treed with mature woods. The property provides habitat to a variety of songbirds, pileated woodpeckers, herons and white-tailed deer. The area is a known habitat for the threatened Black Rat Snake. Your support has allowed this property to be preserved in perpetuity by your Trust.

Your past support has meant that the wetlands of Besley Woods at Kemptville have been preserved. This property consists of 61.5 acres and is part of the Kemptville Creek Wetland Complex. The property has 1000 feet of frontage on the Rideau River and has been certified ecologically sensitive by Environment Canada.



Future generations will be able to observe the waterfowl that call these wetlands home, knowing that their parents and grandparents had the foresight to preserve these natural areas.

Your Trust Knows It Can Count On Your Continued Support.

Won't you join with your friends and neighbours and make a special gift to ensure that this work will continue. With your generous support more of the natural spaces along the Rideau will be preserved for the benefit of your community.

Your gifts will be put to immediate use to acquire additional lands along the Waterway. There are many opportunities available now to acquire further lands and protect them for the enjoyment of future generations. A donation of \$100 will preserve an additional 10 feet of waterfront property. A donation of \$500 will enable your Trust to protect an acre of natural lands in perpetuity.

Please take a few minutes to fill out and return the donor card. Canadian tax receipts will be issued for all donations.

In order for our children and our children's children to enjoy this legacy, I am asking for your support for the Trust as it works to preserve the natural areas of our Waterway. This is the obligation we owe the future.

Together we can make a difference.

Yours Truly,

Dave Walker

Executive Director

P.S. To kick off this year's campaign, the Trust received a call from a supporter who has pledged up to \$25,000 per year to help fund the acquisition costs of natural lands along the Rideau for the next five years. These costs include such things as legal fees, appraisal and surveying costs. I think you will agree that this is a very generous donation. Won't you please join with us and mail in the enclosed donor card with your gift so that your children and grandchildren can continue to enjoy the natural spaces along the Rideau.