



Rideau Waterway
LAND TRUST
FOUNDATION INC.

November 2000

Dear Neighbour,

I would like to take this opportunity to introduce you to the Rideau Waterway Land Trust.

During the mid 1990's a group of residents and landowners from the Rideau Waterway became concerned that government resources were becoming inadequate to preserve the areas of natural beauty along the Rideau Waterway that we all took for granted. In 1996 the Rideau Waterway Land Trust was formed. The Rideau Waterway Land Trust became part of a growing phenomenon of community-based land trusts being formed by citizens across Ontario. Land trusts are non-profit, charitable organizations, which secure land for the public benefit.

The mandate of the Rideau Waterway Land Trust is to preserve lands of natural, aesthetic or historic values along the Rideau Corridor.

One of the most important roles of the Rideau Waterway Land Trust is to work with landowners concerned about protecting their land and leaving a lasting legacy for future generations. The volunteers of the Trust provide advice on protection strategies that best meet the landowner's conservation and financial needs. These strategies include donating or occasionally selling parcels of land to the Trust, thereby putting the land under the Trust's permanent care. Another approach lets the landowner retain ownership and use of the land while preserving it by donating a conservation easement. The conservation easement places protective restrictions on future uses of the land to preserve its natural features.

The Trust is made up of members and volunteers from your community working under the leadership of a volunteer Board of Directors. Individuals who get involved with the Trust share an abiding interest in the preservation of the natural areas of the Waterway. They come from a variety of backgrounds, land-use planning, ecology, education, law, finance, fundraising and management. This partnership of skills among your community volunteers ensures the success of the Trust.

The Rideau Waterway Land Trust provides a vehicle for those who want to commit their energy and resources to a non-government organization. All monies raised stay in the community and benefit projects within the community.

Some of the completed and ongoing projects that your community's contributions are making possible include:

Van Niel Woodlands

This 23-acre area of mature woods includes over 3000 feet of shoreline, at Fiddlers Elbow on Cranberry Lake. The shoreline, with its granite outcroppings and 100 year-old trees, has remained untouched for generations. The small island that sits immediately adjacent is an area of unparalleled natural beauty. The Van Niel family generously donated this property to the Rideau Waterway Land Trust in memory of their parents who vacationed at Fiddler's Elbow beginning in the 1920s. With your support the Trust will be able to preserve this property in its natural state in perpetuity.

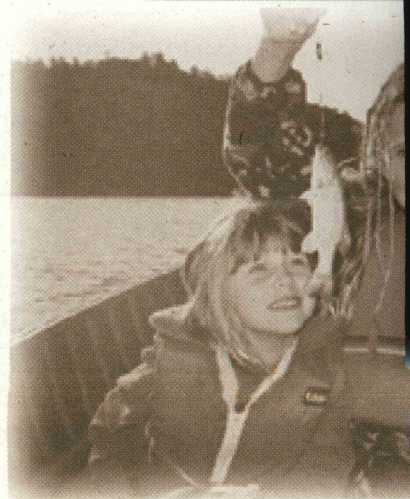
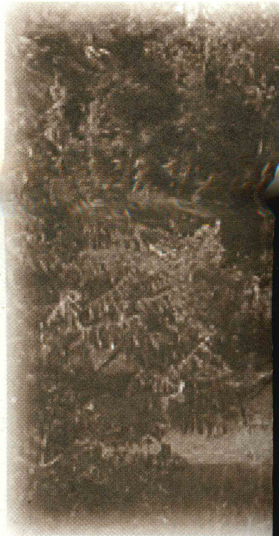
Kate's and Jack's Islands

Situated in Whitefish Lake, are a pair of islands that have been entrusted to the care of the Rideau Waterway Land Trust. Kate's Island, with its towering pine trees provides a habitat for the resident ospreys of Whitefish Lake. The small sand beach will provide an area for future generations to pause and enjoy the beauty of the Waterway.

Located close by is Jack's Island. Situated in a quiet bay, this island has provided a restful stop for generations of canoeists as they explore the wonders of the Waterway.

The Brown family donated these islands in the memory of their parents and it is their desire that their natural beauty be preserved and shared with all users of the Waterway.

Red Rock



Van Niel Woodlands





Weekend at the cottage



Red Rock

Nestled on the north shore of Big Rideau Lake you will find the current project of the Trust. Here you will discover a natural sand beach watched over by a magnificent granite rock. This treasure is known as Red Rock to generations of Rideau cottagers and boaters. It is situated in an area that is becoming heavily developed.

Two long-term Rideau residents, Sue Halpenny and Christie Cass, initiated this project. They approached the Trust with an offer to purchase the land and donate it to the Trust. It is their wish that no development take place on this site that that it be preserved for the benefit of future generations. They knew the Trust could fulfil this dream.

Here's How You Can Make A Difference!

With the financial support of individuals like you the Trust has been able to secure over 6000 feet of shoreline along the Rideau and preserve it for the benefit of present and future generations. All of this has been accomplished since 1996! This is a great start but we need your help to carry on this work.

To date many lands have been offered to the Trust by generous donors who wish to see their gifts preserved for the enjoyment of future generations.

There is a cost involved in accepting these wonderful gifts. These costs include legal, survey and appraisal expenses.

In addition the Trust has established a Land Management Endowment Fund. The purpose of this fund is to ensure that money will be available for the care of these lands in perpetuity. Portions of all monies donated to the Trust are set-aside in this Endowment Fund. The interest income from this fund is used to pay the ongoing costs of owning and managing these lands. You will agree that it is not only important to preserve lands of

ecological significance and natural beauty along the Waterway, but also that resources be available for the care of these lands.

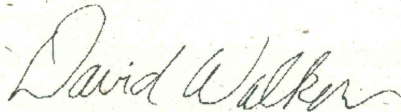
With the summer of 2000 drawing to a close it gives many of us an opportunity to reflect on the beautiful treasure, the Rideau Waterway, that many of us take for granted. Many of the Trust's supporters travel for miles, in some cases returning for generations, to enjoy the natural beauty of the Waterway. Memories that will last a lifetime have been made here.

In order that our children and our children's children can enjoy this legacy I am asking for your support for the Trust as it works to preserve the natural areas of our Waterway. This is the obligation we owe to the future.

You can help. In order that this work can continue I am asking you to please take a few moments and return the enclosed reply card with your contribution. As a member of the Trust you will join over 300 of your neighbours as we work to preserve lands along the Waterway. With a donation of \$100 you will preserve 10 feet of waterfront property and do your part in leaving a legacy for the next generation. Canadian tax receipts will be issued for all donations.

Together we can make a difference.

Yours truly,



Dave Walker, Treasurer
Rideau Waterway Land Trust

P.S. The accompanying photograph is of the children of some very good family friends of Sharon and mine. The photo captures the excitement of the first catch on a recent weekend spent at their grandparents' cottage. Won't you please work with us and mail in the enclosed reply card with your contribution so that future generations can enjoy what we have all enjoyed.

P.O. Box 249, Portland, Ontario K0G 1V0 · (613) 272-0172

Website: www.rideau-info.com/landtrust/

Charitable Registration No. 89233-6348 RR0001



This mailing made possible through a grant from Friends of the Environment, supported by Canada Trust and its customers.

