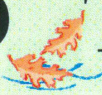


The LAND TRUST NEWS



Preserving Special Places In Our Community

RWLT Dinner and Benefit Auction Land Preservation- A Community Affair



Mr. Moe Johnson (standing) chats with our guest speaker Mr. Jay Espy

The evening was a great success thanks to the many friends and neighbours who joined us to celebrate the recent gift to the Land Trust of 145 acres known as Nicholson's Point Woodlands.

The dinner was held in Kingston at Minos Village, all in attendance had an enjoyable evening. The annual auction was once again spirited and also a fundraising success. Mr. Jay Espy, a Canadian Land Trust Alliance Board member from Freeport, Maine, joined us in our celebration as guest speaker. He spoke of the importance of community support to make a land trust successful.

The Rideau Waterway Land Trust would like to thank all those who joined us for this very special evening and the many sponsors who supported this event.

Nicholson's Point Woodlands, the newest RWLT property, was the site of a spring clean-up. Forty RWLT members, friends, and neighbours pitched in to help clean-up the trails. We wish to thank all those involved in the clean-up. Over 5800 lbs was collected and sent to the recycler for disposal. A special thank-you to our biologist Simon Lunn who took this photo of the trilliums in full bloom lining the trails.



WWW.RWLT.ORG

RIDEAU WATERWAY LAND TRUST—EST.1996

Spring/Summer

NEWSLETTER PUBLISHED BY THE



Rideau Waterway

LAND TRUST

Preserving special places in our community

And more inside...

Spring/Summer 2009 The LAND TRUST NEWS

RWLT Ready To GO!!!

The Land Trust has been growing each year and we are now able to participate at venues from Ottawa to Kingston, which allows us to meet more people and tell the story of the RWLT.

With the help of the **Trillium Foundation**, the RWLT was able to acquire a trailer which carries a full display panel showcasing our properties. With this trailer we have travelled to numerous locations along the Rideau Corridor representing the Land Trust. There will be many more events throughout the summer months which we will be participating in and educating the public on our work.



Join Us At Seeley's Bay for Their Annual Canada Day Celebrations Our Booth Will Be Located In Centennial Park

The Rideau Waterway Land Trust will be participating in the Canada Day celebrations at Seeley's Bay Wednesday July 1. Our booth will be set-up in the Pavilion in Centennial Park showcasing RWLT properties and providing information to the public on the conservation activities undertaken by the Land Trust. Come out and celebrate Canada and the pristine areas in the community that the RWLT preserves.

Happy Birthday Canada!



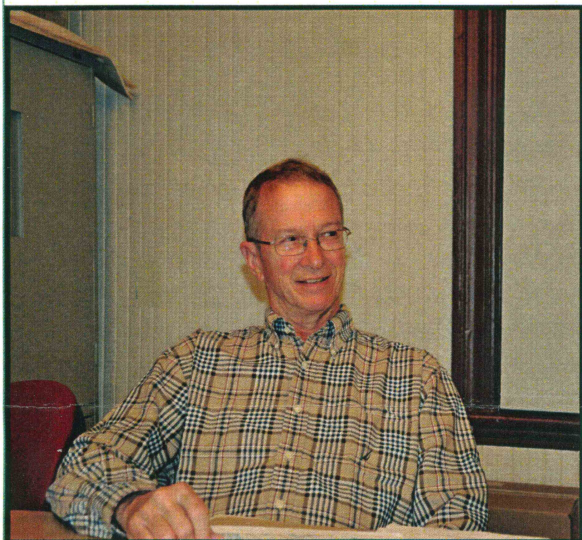
Seeley's Bay, Ontario

Rideau Waterway Land Trust and Rock Dunder Participating In Doors Open Ontario September 19, 2009



Stunning Rock Dunder, a Rideau Waterway Land Trust property, will be a feature site for the September 19, 2009 Doors Open Ontario, Rideau Lakes-Westport sector. Located at the end of Stanley Lash Lane just off of Highway 15 south of Morton, Rock Dunder is a well known landmark in Eastern Ontario. The expansive property, with over 7000 feet of shoreline on Morton Bay and in close proximity to the UNESCO World Heritage Site, the Rideau Canal, is a natural land formation and the habitat of many rare plant and wildlife species. The 275 foot rise to the lookout allows visitors a breathtaking panorama of the surrounding countryside and is one of the highest points in the area. A series of hiking trails take visitors to various vantage points and interpreters will be available to guide guests.

Welcome To Peter Gillespie



This Spring we welcomed Peter Gillespie to our Board of Directors.

Peter has been a dedicated member of the Land Trust for several years and we are pleased to have him join our Board of Directors.

Peter is a graduate of McGill University (B. Sc.) and Queens University (M.B.A.) After a distinguished career with the Federal Government, including holding the position of Director General with Environment Canada, Peter led the development of the Canadian Executive Services Organization's "CESA At Home" program which brings economic development to small Canadian communities, mentoring to small business and capacity building to not for profit organizations, using CESA's 4000 volunteers.

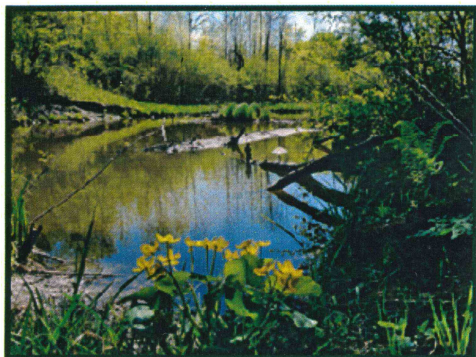
Peter has a deep connection to the Rideau and continues to spend summers at the family's cottage on the Upper Rideau. When not volunteering for the Trust, or hiking the trails at Rock Dunder, Peter enjoys landscape painting and is past President of the Rideau Lakes Artists' Association.

Welcome aboard Peter!

Ecological Gift Program Donation of Carter Property

Recently, the Rideau Waterway Land Trust agreed to accept two significant parcels of land through the generosity of a donor who has supported the Land Trust for many years.

Ms. Brenda Carter's request is for these properties to be donated to the Land Trust under the Ecological Gift Program which is administered by Environment Canada. One parcel has 430 acres and is located adjacent to the Marlborough Forest in Ottawa and represents the largest parcel donated to the Land Trust to date. The second parcel contains 100 acres and is in the Township of Montague.



The Land Trust feels very privileged to have been chosen to care for these properties.

Our Goals 2009

Each year the Rideau Waterway Land Trust strives to protect and preserve significant habitat in our community for future generations. In order to successfully work towards this objective and continue to expand our conservation areas the Land Trust highlights the following goals:

- * **Enhance our human resources and skills** through continued recruitment of volunteers and increased training and education programs. The Land Trust will build a network of volunteers to further our land conservation work in the Rideau Corridor.
- * **Take a more pro-active approach to land preservation through acquisition**, ensuring we do not miss opportunities to preserve the significant lands and habitats of the Rideau Corridor.
- * **Increase public awareness of the Land Trust** by establishing a presence at local events along the Rideau and by being proactive with other community groups' activities. We need to demonstrate how the accomplishments of the Land Trust benefit individuals, families, and businesses that live, work, and play in our community.
- * **Increase fundraising** by building a more diversified fundraising program which will establish a base of operational support, increase stewardship funds and ensure long-term financial support for our mission, "to preserve important natural lands and habitat in the Rideau Corridor and foster a healthy future for our communities."



Rideau Waterway Land Trust Board of Directors

Hon. Bob Rae , Honorary Chair
Doug Lewis, President
Simon Lunn, Secretary
Brian Gold, Director
Neal Ritchie, Director
Peter Gillespie, Director
Sharon Walker, E. D.
Dave Walker, Advisor

RWLT Summer Student 2009

Alexandrea Watters will be working as our student for this summer. She is an Honours Bachelor of Science Specialization in Biology undergraduate student at the University of Ottawa. She will be assisting with property monitoring throughout the summer.



1 Jasper Avenue, Smiths Falls, ON K7A 4B5
Tel: 613-284-2010 Fax: 613-284-8093
Email: sharonw@rwlt.org Website: www.rwlt.org
Charitable Registration # 89233-6348-RR0001

The mission of the RWLT is to preserve important natural lands and habitat in and round the Rideau Corridor and to foster a healthy future for our communities.